

**Primary Care Initiative :  
Integration in Action**

National Conference on Collaborative Care,  
May 2009




---

---

---

---

---

---

---

---

---

---

---

---

**Workshop Objectives**

The workshop learner will

- Gain knowledge of CAMH perspectives and activities within the Primary Care sector
- Identify opportunities to leverage resources and skill-mix across sectors.
- Contribute their perspectives to how a specialty Mental Health hospital can support Primary Care.

---

---

---

---

---

---

---

---

---

---

---

---

**What is CAMH?**



**Specialized MH&A  
Hospital**

**The 5 Pillars**

- Client Care
- Education
- Research
- Policy
- Health Promotion

---

---

---

---

---

---

---

---

---

---

---

---



## What is CAMH? Patient Care

- Unique patients 08/09
  - Inpatients 3,849
  - Outpatients 17,866
  - ER patients 3,168
- 50 % seen before in previous 2 years

Fiscal Year	OutPatient visits	Inpatient days
2005/2006	465,149	180,906
2006/2007	422,756	180,731
2007/2008	436,193	186,823

---

---

---

---

---

---

---

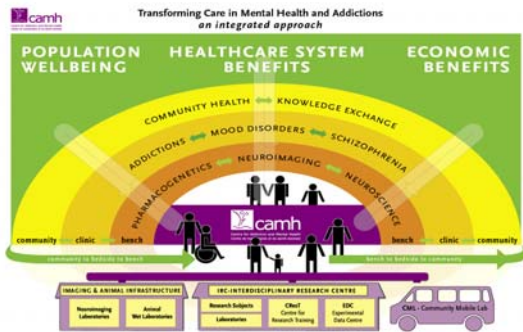
---

---

---



## What is CAMH? Research




---

---

---

---

---

---

---

---

---

---



## What is CAMH? International Partners

- WHO, PAHO, WONCA
  - Mental disorders in primary care.
- Pan American Health Organization/World Health Organization Collaborating Centre
  - Office of International Health

---

---

---

---

---

---

---

---

---

---



## New Thinking- New Approaches

How does a specialized hospital support integrating MH&A and primary care?

---

---

---

---

---

---

---

---



## Guiding the Primary Care Initiative

Two broad aims:

1. Enhance capacity within the sector to manage mental health and addictions issues;
  - MH&A focus
2. Ensure that persons with existing MH&A issues are well-served by the primary care system.
  - Address healthcare disparity between MH&A patients and general population

---

---

---

---

---

---

---

---



## Background

### Primary Care Action Plan

5 major strategies

1. Create organizational focus
2. Improve primary care for CAMH clients
3. Increase service integration among MH&A services and primary care
4. Build capacity within primary care systems
5. Develop policies and advocate for change



---

---

---

---

---

---

---

---

**camh** | Organizational Focus

**camh** | Strategic Plan Renewal 2009-2012  
Centre for Addiction and Mental Health  
Centre de toxicomanie et de santé mentale

#3 Building System Capacity  
Collaborative Care

- Over the next three years, focus on CAMH's work with the primary care sector, as the key mechanism for developing this kind of approach to clinical capacity building

---

---

---

---

---

---

---

---

**camh** | The Conceptual Model

Primary Care + CAMH = MHA Capacity

CAMH = MHA Capacity

---

---

---

---

---

---

---

---

**camh** | Primary Care Council

Activities and Focus

New Roles

Strategic Support to:

- Coordinate Planning
  - Priority projects
  - Align current activities
- Identify and allocate resources
  - Internal and external
- External Reference Group
  - Members and Mandate
- Reporting
  - Internal governance
  - External partners
  - Primary Care Sector

---

---

---

---

---

---

---

---



### New Roles: Primary Care Consultant

#### Psychiatrist

- Consult on education developed for the primary care sector.
- Develop a shared care placement and supervision for CAMH residents
- Facilitate linkage of CAMH clients without primary care to primary care services in the community,

---

---

---

---

---

---

---

---



### New Roles: Primary Care Liaison

#### Addictions Program

- Position focusing on capacity building initiatives for Addictions and Concurrent Disorders within PC sector
- Collaborative relationship development coupled with practice expertise
- Interdisciplinary and cross-sectors of social services

---

---

---

---

---

---

---

---



### Primary Care to CAMH Clients

#### Proposed Family Health Team

##### Family Health Team with unique MH&A focus

- MH&A services enhanced through prevention and health promotion 'Primary Care Plus'
- Practice approaches for seriously mentally ill transferable across the PC sector
- Primary care services for Queen W area residents, and for underserved, high mortality cohort of CAMH clients
- Collaborative, interdisciplinary model with emphasis on shared care

---

---

---

---

---

---


---

---

**camh** Primary Care Forum

Messages heard

- Tools and education are welcomed, but more powerful in relationship context
- New models for clinical capacity building- direct access to CAMH expertise for 'in the moment' consultations
- Take education into the community 'Academy in the Community'
- E-Health: comprehensive, current, unique




---

---

---

---

---

---


---

---

---

---

**camh** Web Portal for Professionals




---

---

---

---

---

---

---

---

---

---

**camh** Steps So Far

Primary Care Initiative has:

- Momentum and a plan
- Actions linked to the plan
- CAMH-wide engagement
- Emerging PC sector interest
- Leadership investments



What's needed next

- Research investments
- Project partners
- Support of our programs, our community and yours

---

---

---

---

---

---

---

---

---

---



Discussion

What are the most important contributions CAMH could make to education, training or other resources for PC clinicians?

- Greatest Gaps?

Can you see opportunities for your organization to work with CAMH to address these gaps?

In an integrated system of MH&A care, what relationship would your organization have with CAMH?




---



---



---



---



---



---



---

THANK YOU



Centre for Addiction and Mental Health  
Centre de traitement et de soins mentaux

---



---



---



---



---



---



---